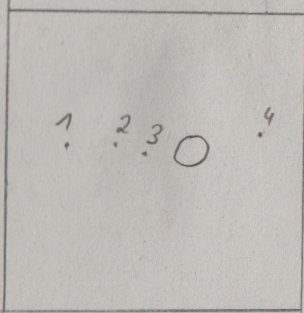


Jupiter + Gallileische Monde

01.11.2022, 18:42 Uhr, Lp2 SE

Mak (102/1300)mm, 40mm Okular, 90° Amici

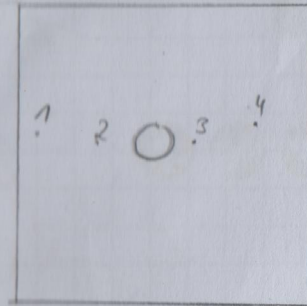


- 1 Ganymede
- 2 Europa
- 3 Io
- 4 Callisto

Jupiter + Gallileische Monde

05.11.2022, 17:33 Uhr, Lp2 SE

Mak (102/1300)mm, 40mm Okular, 90° Amici

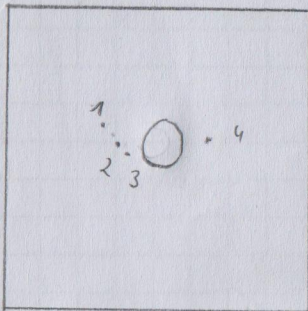


- 1 Callisto
- 2 Europa
- 3 Io
- 4 Ganymede

Jupiter + Gallileische Monde

02.11.2022, 18:51 Uhr, Lp2 SE

Mak (102/1300)mm, 40mm Okular, 90° Amici

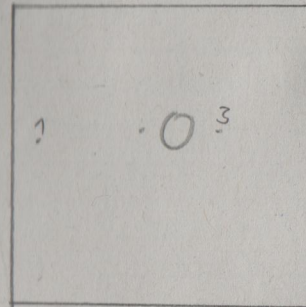


- 1 Callisto
- 2 Europa
- 3 Ganymede
- 4 Io

Jupiter + Gallileische Monde

06.11.2022, 17:39 Uhr, Lp2 SE

Mak (102/1300)mm, 40mm Okular, 90° Amici

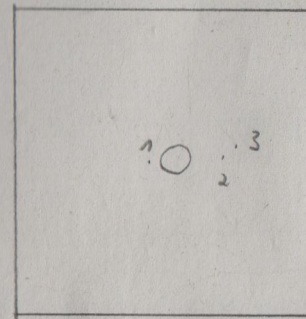


- 1 Callisto
- 3 Europa

Jupiter + Gallileische Monde

10.11.2022, 18:03 Uhr, Lp2 SE

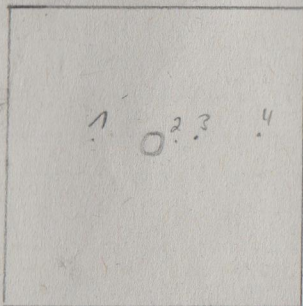
Mak (601/750)mm, 40mm Okular, 90° Amici



- 1 Io
- 2 Ganymede
- 3 Europa

Jupiter + Gallileische Monde

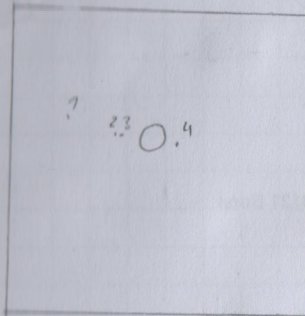
14.11.2022, 17:42 Uhr, Lp2 SE
(70/400)mm, 32mm Okular, 90° Amici



- 1 Ganymede
- 2 Io
- 3 Europa
- 4 Callisto

Jupiter + Gallileische Monde

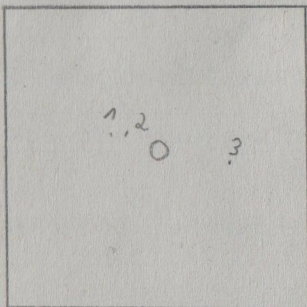
23.11.2022, 18:20 Uhr, Lp2 SE
(70/420)mm, 32mm Okular, Amici 90°



- 1 Callisto
- 2 Europa
- 3 Ganymede
- 4 Io

Jupiter + Gallileische Monde

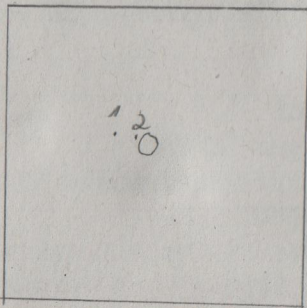
19.11.2022, 17:50 Uhr, Lp2, SE
(70/420)mm, 32mm Okular, 90° Amici



- 1 Europa
- 2 Callisto
- 3 Ganymede

Jupiter + Gallileische Monde

20.11.2022, 18:42 Uhr, Lp2 SE
(70/420)mm, 32mm Okular, 90° Amici



- 1 Callisto
- 2 Io